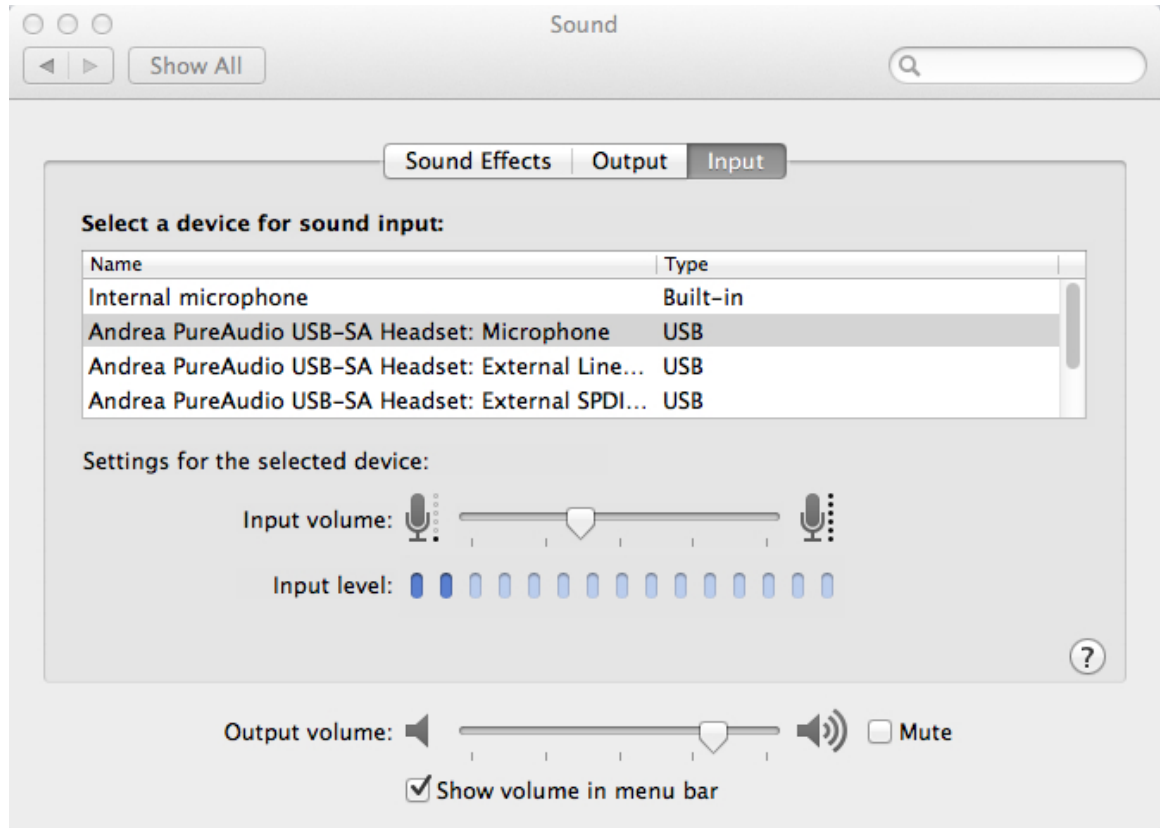


Adding a New Microphone to Dragon Dictate on Your Mac

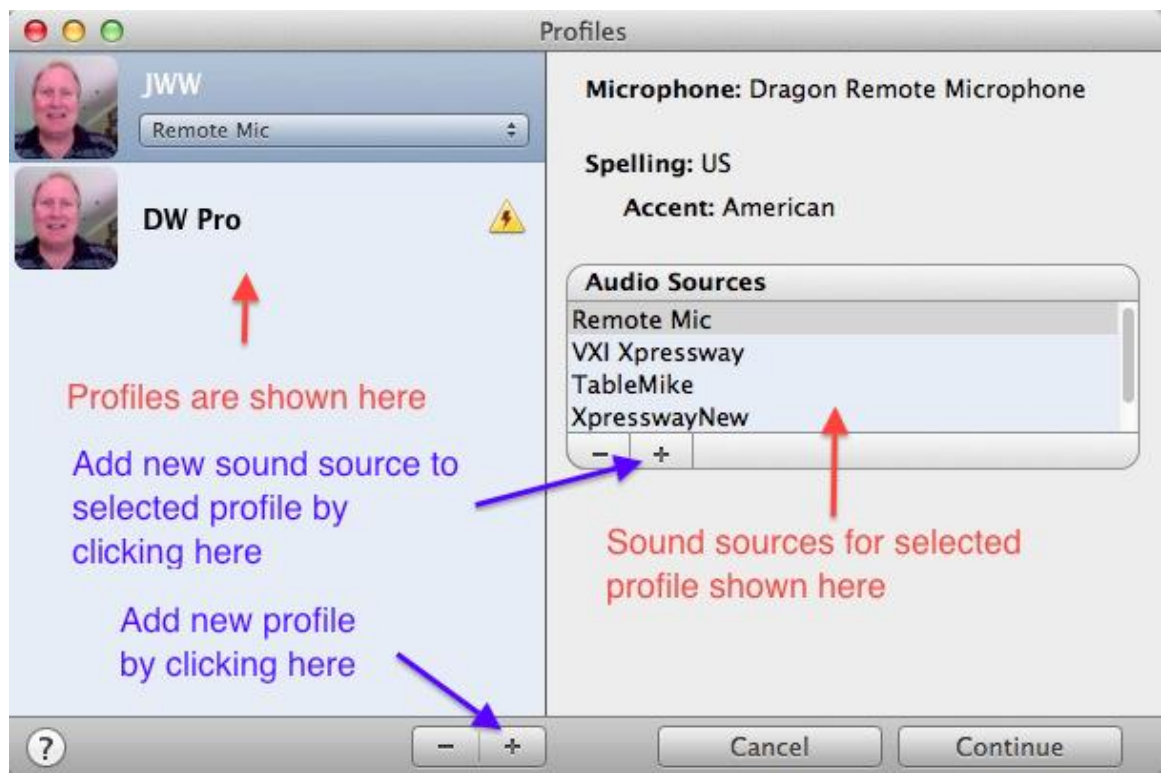
When introducing a new microphone to your Dragon Dictate software, you have two choices – 1) Create a brand new profile based on the new microphone or 2) Add the microphone as a new “audio source” to an existing profile. We will briefly take you through both procedures.

Adding a New Audio Source to an Existing Dragon Dictate User Profile

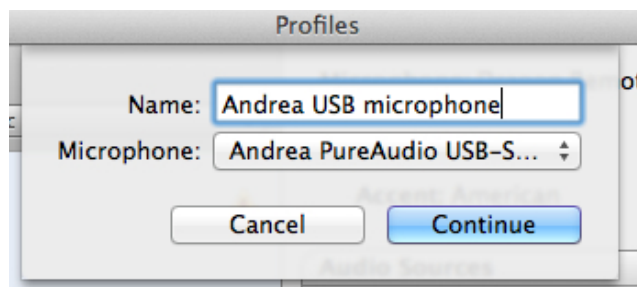
1. If your microphone is a USB microphone, insert it into an available USB port and allow the drivers to be installed. If a Bluetooth microphone, go through the procedure for pairing it to your Mac. You should not attempt to insert an analog microphone into the audio jack on your Mac.
2. Open System Preferences and click on the “Sound” icon in the Hardware section.
3. Confirm that your microphone is present and select it. For this example we will use an Andrea NC 181VM USB microphone. Speak into your microphone and confirm activity in the area labeled “Input Level”



4. Open Dragon Dictate
5. Open the Profiles window by selecting “Profiles” from the Tools menu. You will see the screen below. Note that any existing profiles are shown on the left and sound sources assigned to the selected profile are shown on the right:



6. To add a new sound source to your existing profile click on the “+” sign under Audio Sources. You will need to select your sound source in the lower drop down menu and give it a name in the text entry box above. See below:

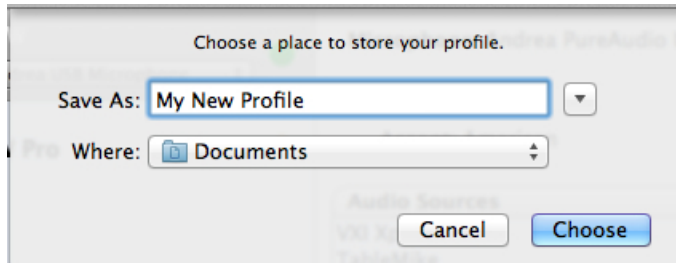


7. Click “Continue” and you will then be brought through the microphone set-up procedure for the microphone and then be asked to read the usual training text. Follow all subsequent instructions.

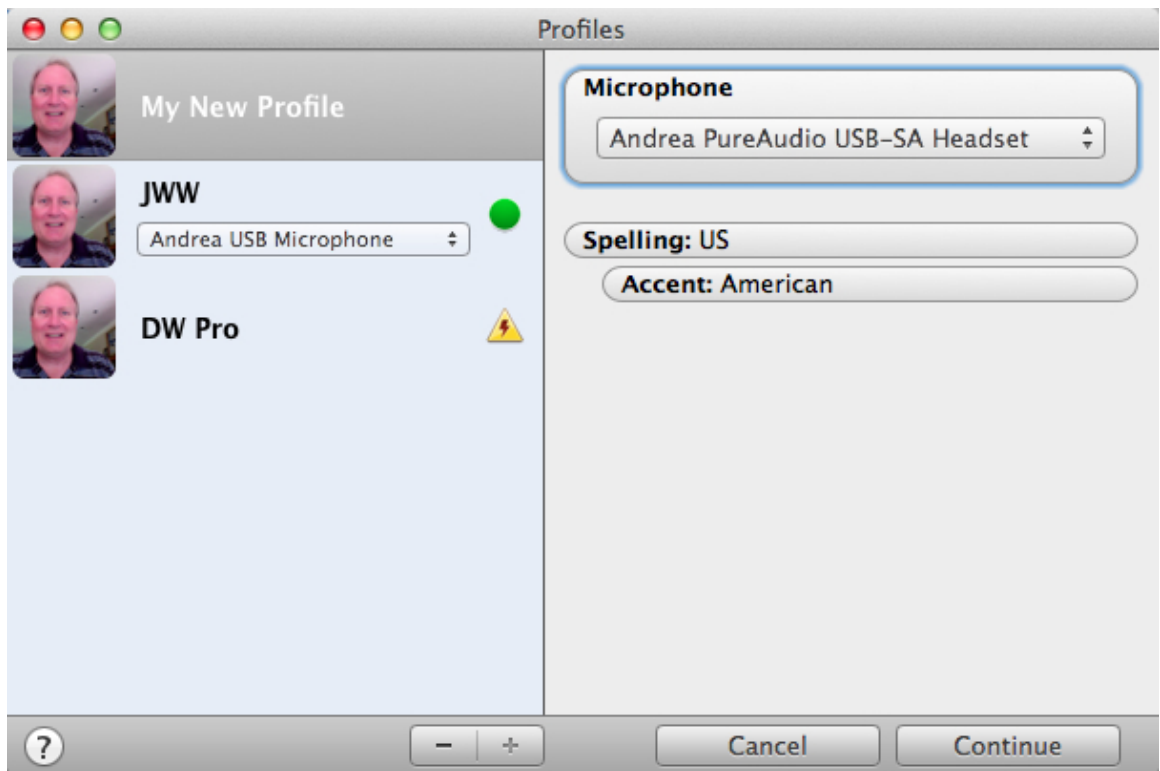
8. If you have multiple profile and multiple sound sources, when you open Dragon dictate you will be brought to the “Profiles” screen where you must be sure to select the profile and audio source you desire.

Adding a New User Profile to Dragon Dictate

1. Follow steps 1-5 shown above for adding a new audio source
2. Select the “+” sign on the left side of the Profiles screen to add a new profile. You will see the following screen in which you must choose a name for your profile and place to store it (OK to keep the default location):



3. As shown below, the Profiles screen will now show your new profile. You must select your microphone from the dropdown in the “Microphone” area and then click “Continue”

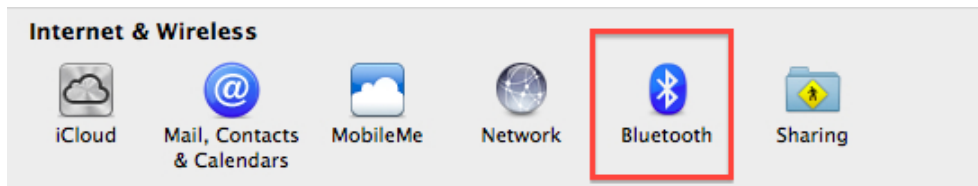


4. Follow all subsequent instructions as you set the level for the microphone and do the required training text for the microphone.

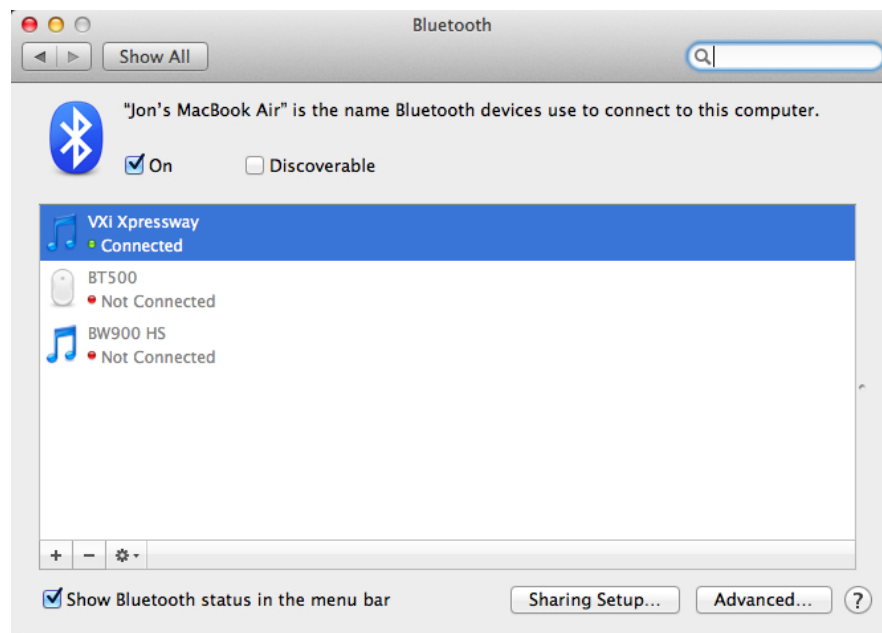
Adding a Bluetooth Microphone to a Dragon Dictate Profile

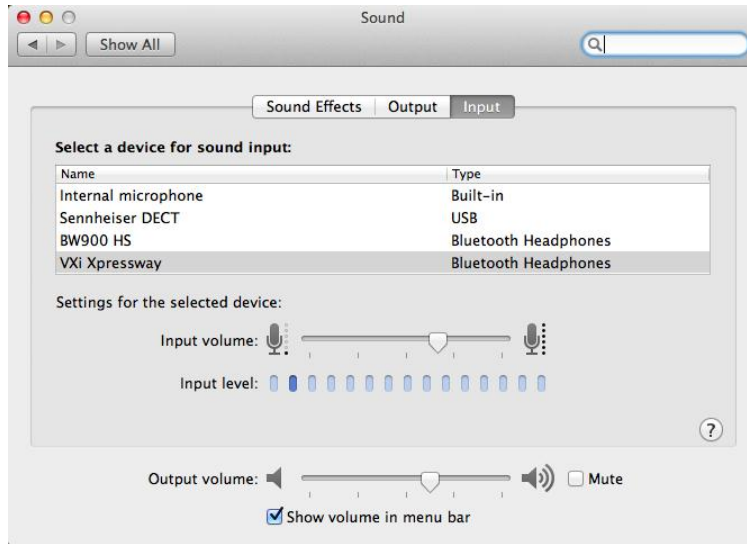
This procedure for this is very similar to what is shown above, with a couple of exceptions:

1. First, you must pair your microphone to your Mac by opening the System Preferences, going to the Internet & Wireless area and selecting “Bluetooth”

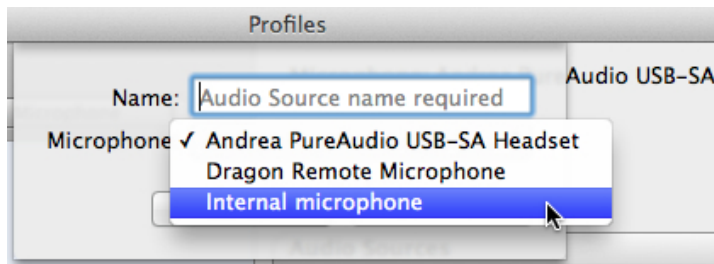


2. Click on the “+” at the bottom of the Bluetooth screen to add the new microphone and follow subsequent instructions until the microphone has been successfully paired. At this point you should see the microphone in your sound device listing (as shown below for the VXI Xpressway):





3. Once the Bluetooth microphone has been paired and chosen as shown above, you can open Dragon Dictate and go through the process of adding a new User Profile or new Audio Source based on this microphone, but with one important exception – Dragon Dictate only recognizes USB microphones and the internal microphone. So you must select “Internal Microphone” as the



4. In addition to selecting “Internal Microphone” as the selected microphone, you must give it a name.
5. Follow all subsequent steps to add your new audio source as outlined at the top of this document.
6. Finally, when using your Bluetooth microphone since it is being recognized by Dragon Dictate as an “internal microphone”, it is essential that your Bluetooth microphone is paired with your Mac and selected as select the preferred source as shown in step 2 above.

For more information, please refer to the Dragon Dictate User Manual available at [Help > User Manual](#)

Copyright 2011, Speech Recognition Solutions. All rights reserved.