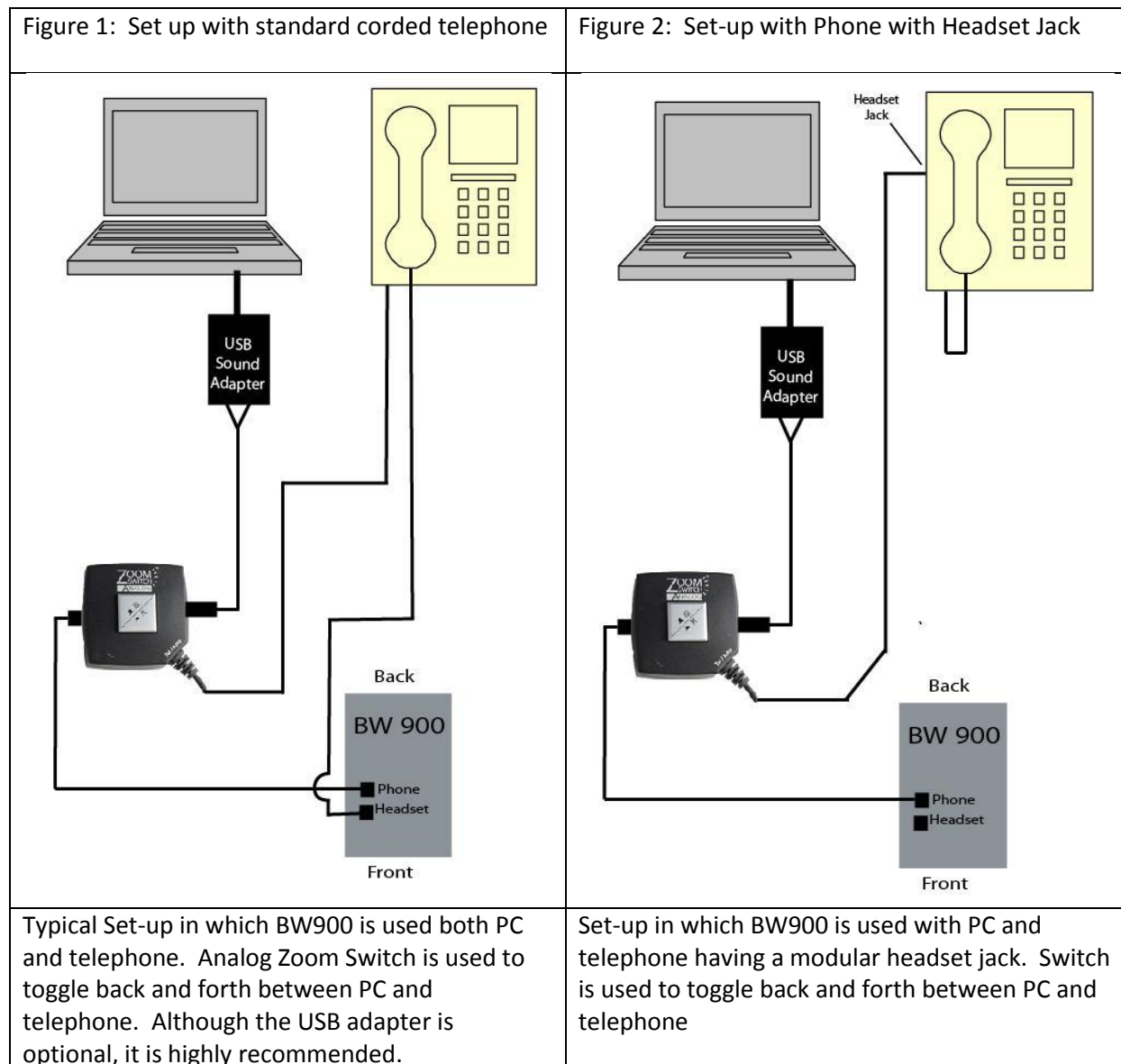


Sennheiser BW900 Wireless Microphone with Zoom Switch Analog

Set-Up and Instructions for Use

This unique microphone is designed for use with a telephone, but can also be connected to a PC via several mechanisms. Connecting the BW900 to a Bluetooth connection is discussed elsewhere. These instructions describe how to connect your BW900 to a PC using a reliable wired connection with an Analog Zoom Switch and its included modular twin 3.5 mm cable.

Preliminary Set-Up: First, you must make the basic connection of the BW900, Zoom Switch Analog, your PC and your telephone. Depending upon whether you have an office telephone with a modular “headset” jack, or a regular corded telephone, use the set-up described below, using the included modular telephone cords.



Details of connections:

With Standard Telephone (Figure 1):

1. A modular telephone cable must connect from the “Phone” jack on the BW900 to the jack on the left side of the Analog Zoom Switch
2. A modular telephone cable must connect from the “headset” jack on the BW900 to the telephone receiver
3. The fixed expandable modular cable attached to the right lower corner of the Analog Zoom switch should attach to the telephone jack to which the telephone headset normally connects.
4. The long cable with twin 3.5 male plugs is attached to the right side of the Analog Zoom Switch and attaches either to a USB sound adapter or directly to the microphone and sound jack on the the PC. Although the use of a USB adapter is optional, it is highly recommend.

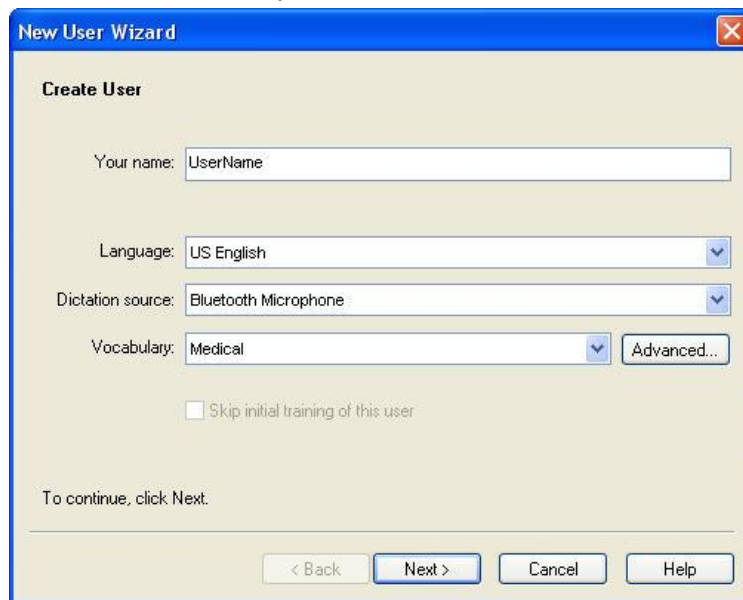
With a Telephone Having a Modular “Headset” Jack (Figure 2):

1. The expandable cord with modular plug attached to the right lower corner of the Zoom Switch Analog is attached to the modular “headset” jack on the telephone.
2. The short modular cable included with the BW900 attaches to the plug labeled “phone” on the base of the BW900 and the other end is attached to the plug on the left side of the Zoom Switch Analog.
3. The long cable with twin 3.5 male plugs is attached to the right side of the Analog Zoom Switch and attaches either to a USB sound adapter or directly to the microphone and sound jack on the the PC. Although the use of a USB adapter is optional, it is highly recommend.

Preparing the BW900 for Use with your PC and Telephone:

1. Be sure you have fully charged the BW900
2. Make all required connections as shown above
3. Set-up the BW900 as appropriate for your telephone (refer to the manual for details) of these steps) by opening the small door on the left side of the BW900
 - a. Set sliding switch to either the A, B, or C position and see which works best with your telephone
 - b. Make a call with the BW900, using the BW900 bluetooth headset and while talking, rotate the volume knob until the person on the other end indicates your speaking volume is appropriate.
4. Prepare the the BW900 for your PC
 - a. If using the rocker switch, be sure you have it set to the left (PC) position
 - b. If being used, be sure your USB sound adapter is connected and drivers installed (this is automatic once it’s attached)

- c. Start Dragon NaturallySpeaking and create a new user (NaturallySpeaking > Manage Users > New)
- d. Select bluetooth microphone as the dictation source



- e. In the next step, choose your sound system (either your USB sound adapter or the built in sound card on your PC).

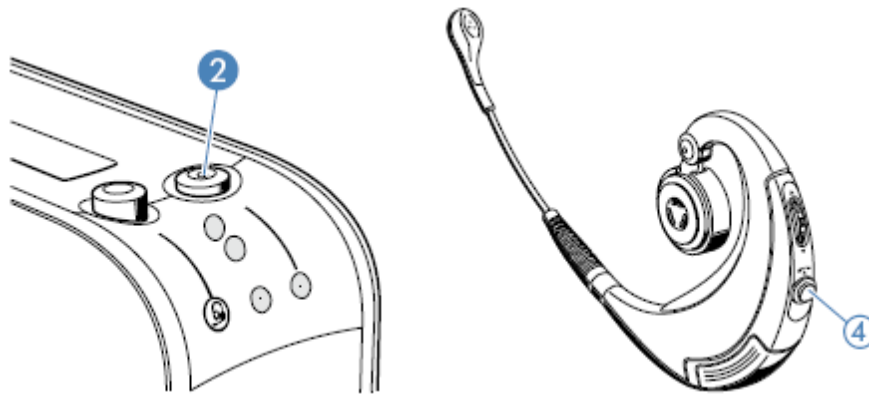


- f. Continue training for a new user, following all instructions and reading appropriate training text

Using the BW900 Wireless Microphone:

With your PC (for speech recognition and other PC applications):

1. Be sure your microphone is fully charged
2. Be sure the central button on the Zoom Switch Analog is in the down "PC" position
3. Remove the microphone from the cradle/charger and mount on your ear, placing the end of the boom about $\frac{3}{4}$ inch from the side of your mouth
4. Be sure the button on the front left of the BW900 base is in the down position (put it in the up position only when you want to lift your telephone headset and use the headset rather than BW900 to make a phone call)
5. Activate the Bluetooth connection by pressing either the base station or headset hook button marked by (2) and (4) in the diagram below. Upon doing so, a small icon will shine blue on the base station below the hook button. This signifies communication between the headset and



6. Use the microphone with dragon as you would with any other microphone

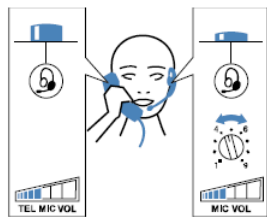
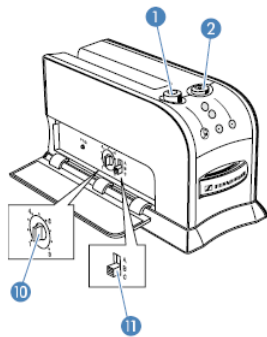
With your Telephone:

1. Push the central button on the Zoom Switch Analog to bring it to the upward extended "Tel" position
2. If not already done, activate the Bluetooth connection between the headset and base station of the BW900 by pressing either the base station or headset hook button (marked by (2) and (4) in the diagram above
3. Initiate or answer a call by lifting the telephone headset off the cradle, and, as needed using the keypad on the telephone to dial.
4. If you want to bypass the BW900 and use the telephone headset to make a call, simply depress the button on the left front of the BW900 base to bring it to the up position.
- 5.

Miscellaneous instructions from the BW900 Manual

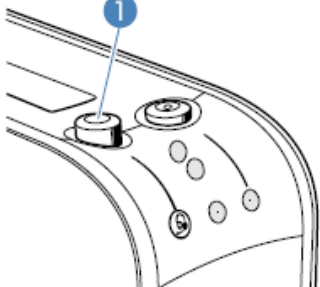
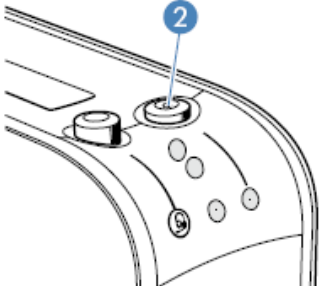
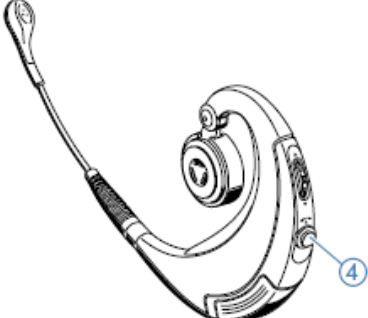
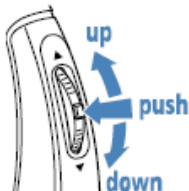
Adjusting the BW 900 to your office phone

To ensure optimum intelligibility, adjust the BW 900 system to your phone as follows:



- ▶ Press the headset/handset switch ① to the “down” position. The connection to the headset can be established.
- ▶ Put on the headset and adjust it for comfort.
- ▶ Press the headset hook button ④ or the base station hook button ②. A wireless link is established between the headset and the base station.
- ▶ Pick up the phone handset from its cradle.
- ▶ Adjust the telephone adjustment switch ⑪ so that the dial tone can be heard loud and clear in the headset.
- ▶ Turn the microphone volume knob ⑩ to position 1.
- ▶ Make a test call to someone while adjusting the microphone sensitivity.
- ▶ Speak to the other party by alternately using the handset (headset/handset switch ① is in the “up” position) and the headset (headset/handset switch ① is in the “down” position), always starting with the handset.
- ▶ Turn the microphone volume knob ⑩ so that the other party can hear you at a comfortable level, whether you use the headset or the handset.
- ▶ Hang up the phone and press either the headset hook button d or the base station hook button B.

Button overview

| Button | Function | See |
|----------------------------------------------------------------------------------------------------------------------|------------------------------------------------------------------------------------------------------------------------------------------------------------------------------------------------------------------------------------------------------------------------------|----------------------------------------------------------------|
| <p>Headset/handset switch ①</p>  | <ul style="list-style-type: none"> toggle between the office phone handset (up position) and the BW 900 headset (down position) | <p>page 14</p> |
| <p>Base station hook button ②</p>  | <ul style="list-style-type: none"> accept an incoming call end a call | <p>page 15 page 16</p> |
| <p>Headset hook button ④</p>  | <ul style="list-style-type: none"> accept a call end a call toggle between Bluetooth device and office phone redial with Bluetooth device activate voice dialling | <p>page 14 page 16 page 22 page 22 page 15</p> |
| <p>Multi switch ③</p>  | <ul style="list-style-type: none"> adjust the volume (up/down) mute the headset microphone or acoustic signals (push) reject calls from the Bluetooth device (push) switch on/off (push until LED flashes 3 x blue: on – red: off) | <p>page 17 page 23 page 23 page 14</p> |