

4 Spencer Rd. Hanover, NH 03755
www.SpeechRecSolutions.com
866-778-0524

Installing Dragon from a USB Thumb Drive

If you are using Dragon on a tablet or other Windows device which does not include a DVD drive, you have the option of either using an external DVD (available for as little as \$30) or using another PC to copy all of the installation files to a USB thumb drive and then use this thumb drive to install Dragon onto your device.

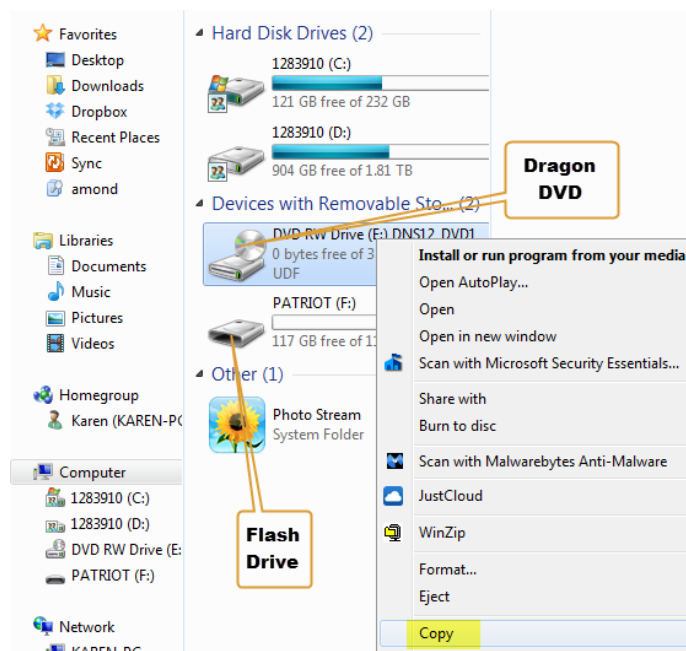
Step One: Install the Dragon Installation Files onto a Thumb Drive

1. Go to any computer with a DVD drive and insert your Dragon installation disc
2. Because the Dragon DVD includes an “auto install” capability you will likely see the following window which you’ll have to exit

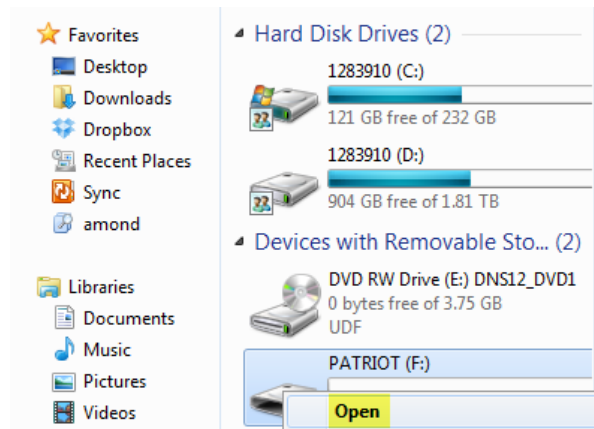


3. Insert your USB Flash Drive
4. Use Windows Explorer to open the Dragon DVD by clicking on the Windows Start and selecting Computer or My Computer

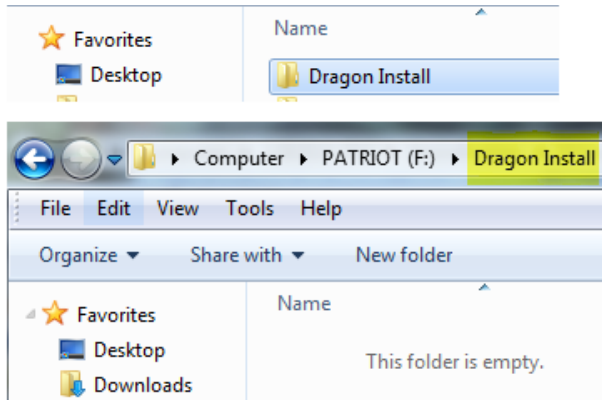
5. Right mouse click on the Dragon DVD (usually drive D or E) and choose **Copy** from the drop down menu. *Note that you may have to wait a few seconds or more for Windows to buffer the files*



6. Double Mouse click or right click and select **Open** to explore the USB Flash drive



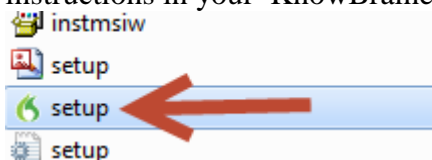
7. Create a new folder on the flash drive, name it something easily recognizable like **Dragon Install** and open the folder.



8. Mouse click into the any region of the empty folder and press **Ctrl+V** to paste a copy of the contents of the Dragon installation disc. You can optionally mouse right-click and select **Paste**. *Note that this process could take as long as 20 minutes.*

Step 2: Install Dragon on your device without the DVD Drive

1. After the Windows copying process Window disappears, take your flash drive to the computer that doesn't have a DVD drive. If you are using a USB 3 flash drive and a USB 3 port on your 2nd computer (typically colored blue), you can open the **Dragon Install** folder on your Flash drive and mouse double click the **Setup.exe** icon with a green flame and follow the remaining step-by-step instructions in your KnowBrainer [Installation/Training Guide](#)



2. If you are using a USB 2 flash drive or USB 2 ports on your 2nd computer, be aware that the installation will be very slow. You can speed up the process by copying the files on the thumb drive to a folder to your Windows desktop and install NaturallySpeaking from the desktop by double-clicking the **Setup.exe** icon with a green flame and follow the remaining step-by-step instructions.
3. If you have installed after moving the files to your hard-drive, once the installation is complete you can feel free to delete the files from your hard-drive, but if you have the space, having them available will be helpful if you need to repair or re-install Dragon at some point in the future.