



Philips DPM 9600 Set-up Instructions

Congratulations on your purchase of this very high quality digital recorder. Along with a personal computer (PC) and Dragon NaturallySpeaking software, it provides an excellent means of converting transcription acquired remotely into a text file on your computer.

Preparing the DPM 9600 for use with your speech recognition software is relatively simple but involves a number of steps and may take 45-60 minutes. The basic process involves these steps:

1. Connecting the 9600 to your PC
2. Installing and configuring the SpeechExec Software on your PC
3. Creating a new Dragon profile for use with the 9600

Once you have accomplished these steps, you can very easily record your speech with the DPM 9600 and quickly import it to NaturallySpeaking for conversion to text within a word processing document.

Step One: connect the DPM 9600 to your PC

1. Open the package and identify the recorder, docking cradle, USB cord, a short (9 inch) USB dongle with a blue label, and the AC adapter
2. Connect the docking cradle to the PC using both the USB cable and USB dongle (the dongle has a blue label on it and is required for security reasons). Optionally connect the AC adapter to the docking cradle.
3. Insert the two AAA batteries into the battery compartment on the 9600 as indicated on the battery cover.
4. Turn on the 9600 and connect it to the docking station
5. Wait for all drivers to be automatically installed by your PC operating system

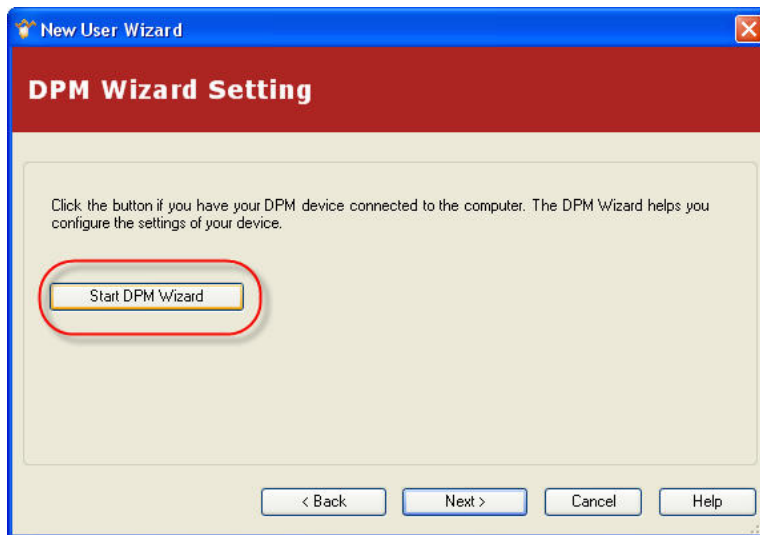
Step Two: Install the SpeechExec Version 5 Software

[Note: the 9600 is still packaged with the older version 4.3 software; we include a disk with the newer version 5.0 software which we recommend. If you have lost the 5.0 software, this can also be downloaded directly from Philips at:

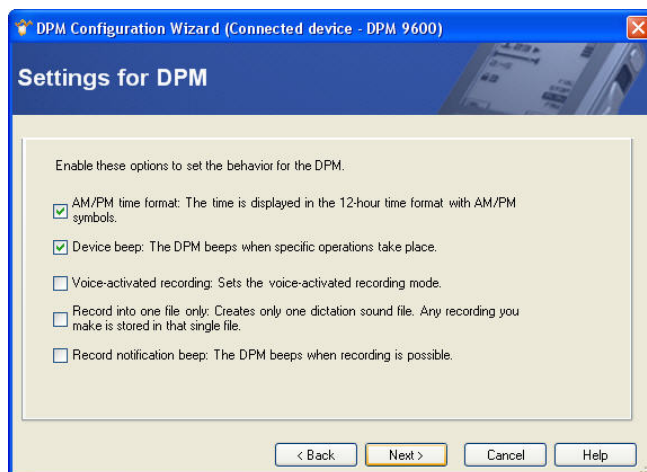
http://www.dictation.philips.com/index.php?id=70&no_cache=1&file=CD_ProDict_5.0.420_04.exe&uid=1794#lic-code]

1. With the 9600 connected as described above, insert the SpeechExec 5.0 installation disk. It should auto start and most of the installation is intuitive. Along the way, we recommend the following :
2. When asked to install Microsoft .NET Framework 3.5, click install. The installation process is fairly slow and may take up to 5-10 minutes. Be patient!

3. When given the choice between Typical of Custom setup type, select “Typical”.
4. Since Philip is not currently make the “Smart Key”, when given the choice, do not select “Start the USB Smart Key license Tool”
5. When asked provide any user name you desire.
6. On the “Folder Settings” menu accept either the default folder location or optionally select “browse” to select another location
7. When you reach the screen called DPM Wizard Setting, this is an opportunity to customize your recorder settings. Do so by clicking “Start DPM Wizard” (after you’ve completed this wizard you will come back to this window and the second time around you’ll click on next)

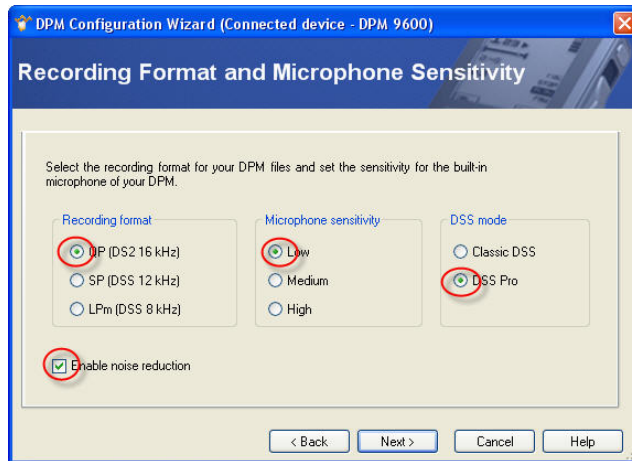


- a. When given the option, click “Yes” so you can overwrite the default quality setting of medium.
- b. It is suggested that you use all the default settings in the next window:

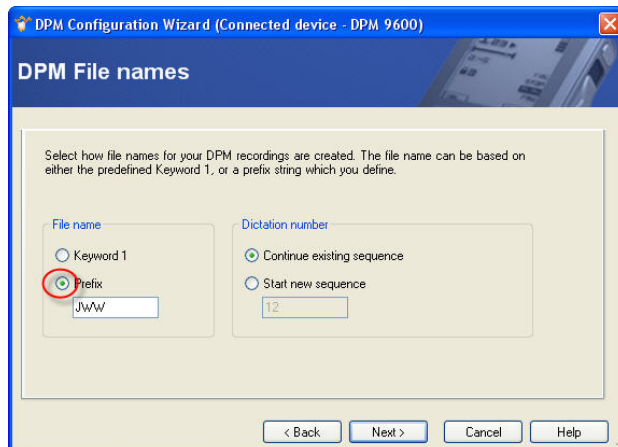


- c. Choose either “Standard” or “Advanced” display based on your preference in the “Appearance” screen

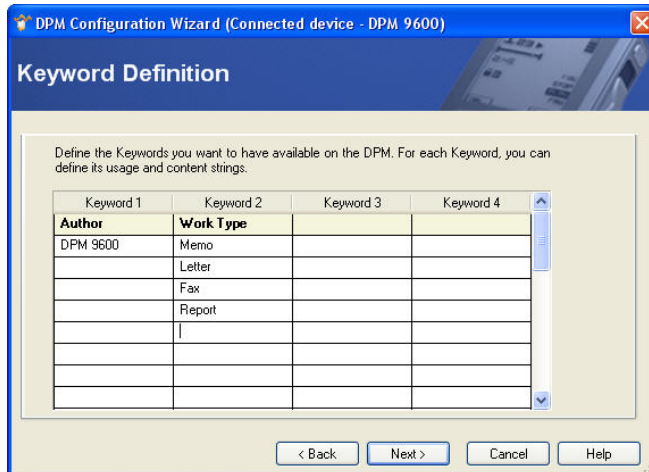
- d. On the “Recording Format and Microphone Sensitivity” window be sure to select the higher quality DS2 algorithms. It is necessary to select “DSS Pro” on the right before the “QP” setting will become available on the left. See below:



- e. On the DPM File Names screen you will be given the option of maintaining the default setting or assigning a prefix to each file name. Choose whichever option you prefer:



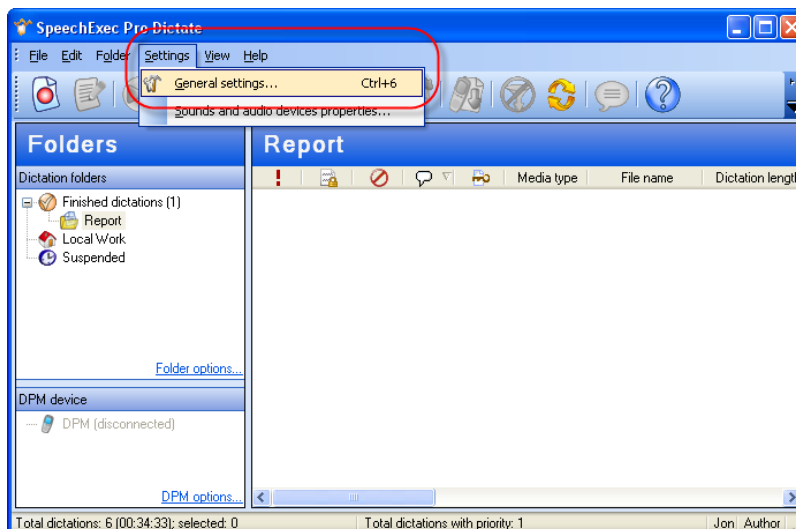
- f. In the “Keyword Definition” screen, you are given the opportunity to add additional keywords to define work types. This is entirely optional.



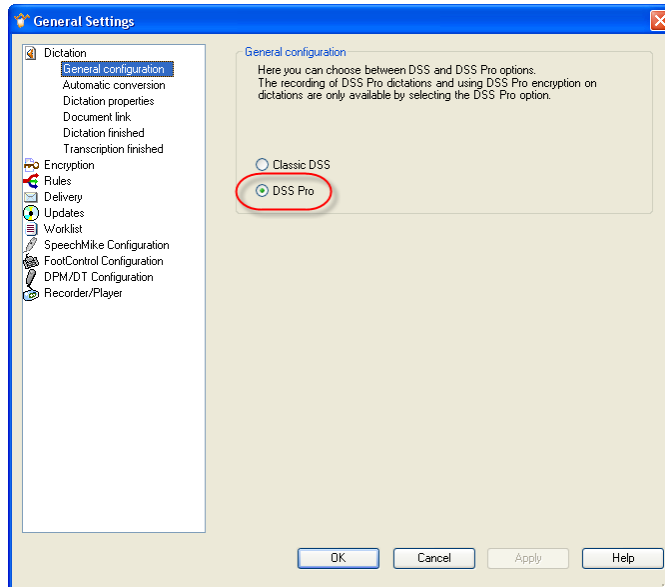
- g. On the “Download Mode and File Type” screen, we recommend the default setting.
- h. On the “DPM Buttons” menu, we recommend you select the default setting
- i. On the “Barcode settings” screen, select Next.
- j. On the “Protection” screen decide whether you want the option of changing settings on your recorder only via the SpeechExec software or on the device itself.
- k. When asked, click “YES” to transfer you settings to the 9600
- l. When again presented with the “DPM Wizard Setting”, this time click NEXT (you have already run the DPM Wizard”
- m. Click “FINISH” when presented with the “Additional Information” screen.
- n. Click YES when asked “Do you want to transfer the new User name to DPM?”

Configure the SpeechExec Settings

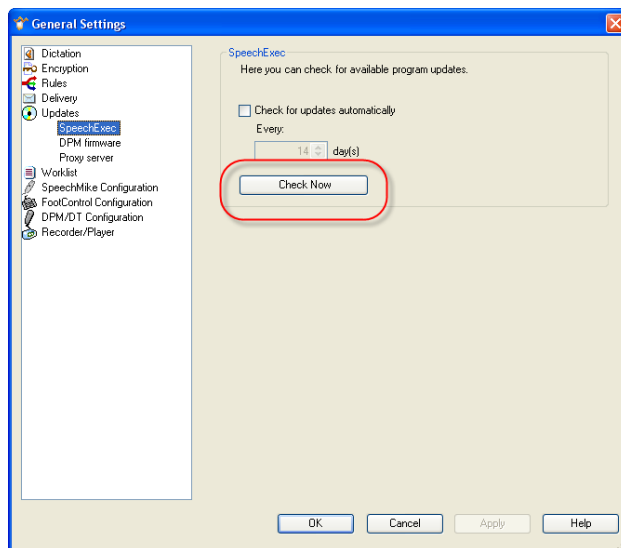
1. Open the “General settings...” menu from the Settings menu on SpeechExec Pro Dictate



2. Select “Dictation” and “General Configuration” from the menu on the left.



3. Under the “Updates” menu, select “Check Now” and allow any new updates to be downloaded and installed. When asked, click “YES” to download the update and click “OK” when asked to Automatically update the software.

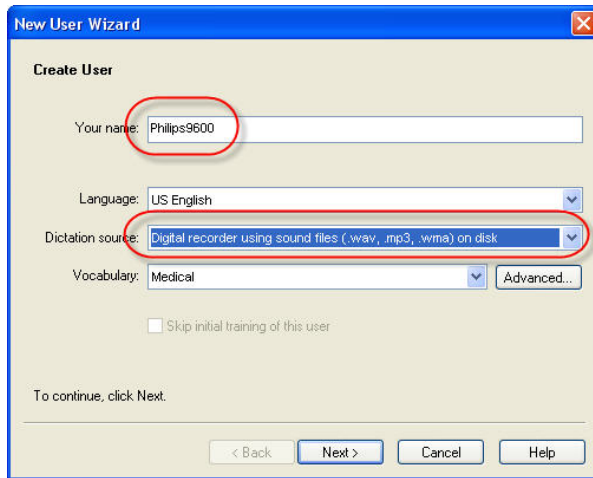


4. Similarly check for DPM Firmware updates and install if available.
5. When above updates are completed, exit and re-launch the SpeechExec software to allow downloaded update to be applied.

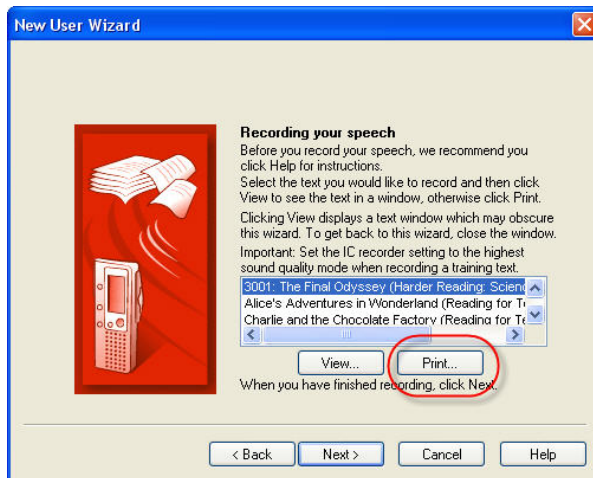
Prepare Dragon NaturallySpeaking for the Philips DPM 9600

[Note: Although not absolutely necessary, we recommend preparing a separate user for use with the Philips DPM 9600 digital recorder. When so prepared, it will allow slightly better accuracy]

1. Create a new Dragon user by opening Dragon and selecting FILE > Manage Users > and New
2. In the new user window, choose any name and select “Digital recorder using sound files (.wav, .mp3, .wma) on disk” under the Dictation Source option (see below)



3. Press next
4. Select any passage for reading. Rather than viewing it, for logistical reasons we recommend printing the passage (see below). Be sure you have your default printer selected since selecting the print button will send the passage directly to your printer without offering printer options.

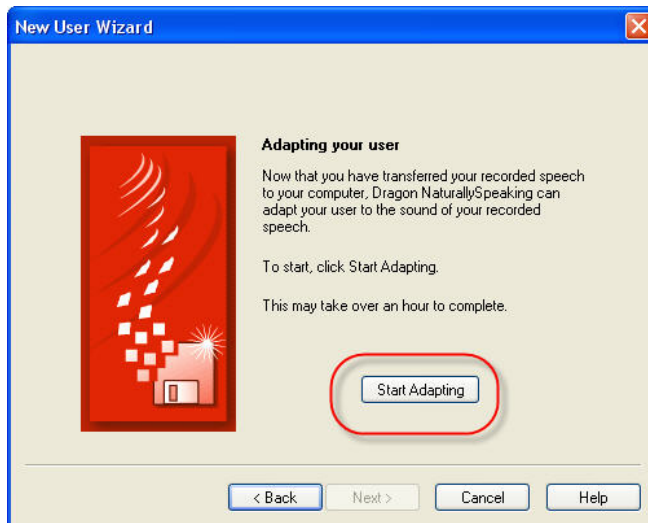


5. Once you have the printed passage ready to read, remove your digital recorder from the cradle, be sure it is powered up, and read the entire passage (this will likely take 20-25 minutes). Be sure to read this carefully and clearly. Don't worry about reading the punctuation.
6. Replace the DPM9600 into the cradle; the training file should automatically download onto your SpeechExec software. If not, you can facilitate the download by clicking on the “Start DPM” download icon.

7. Click on the training file in the SpeechExec window and then convert it to a form suitable for Dragon training by selecting “Convert” in the File menu of SpeechExec. Change the format to “PCM” and the attributes to “11,025 kHz, 16 bit, Mono”; click OK
8. Switch back to NaturallySpeaking and click on Browse to navigate to the file you just converted. Be sure you select the file ending with .wav; select NEXT



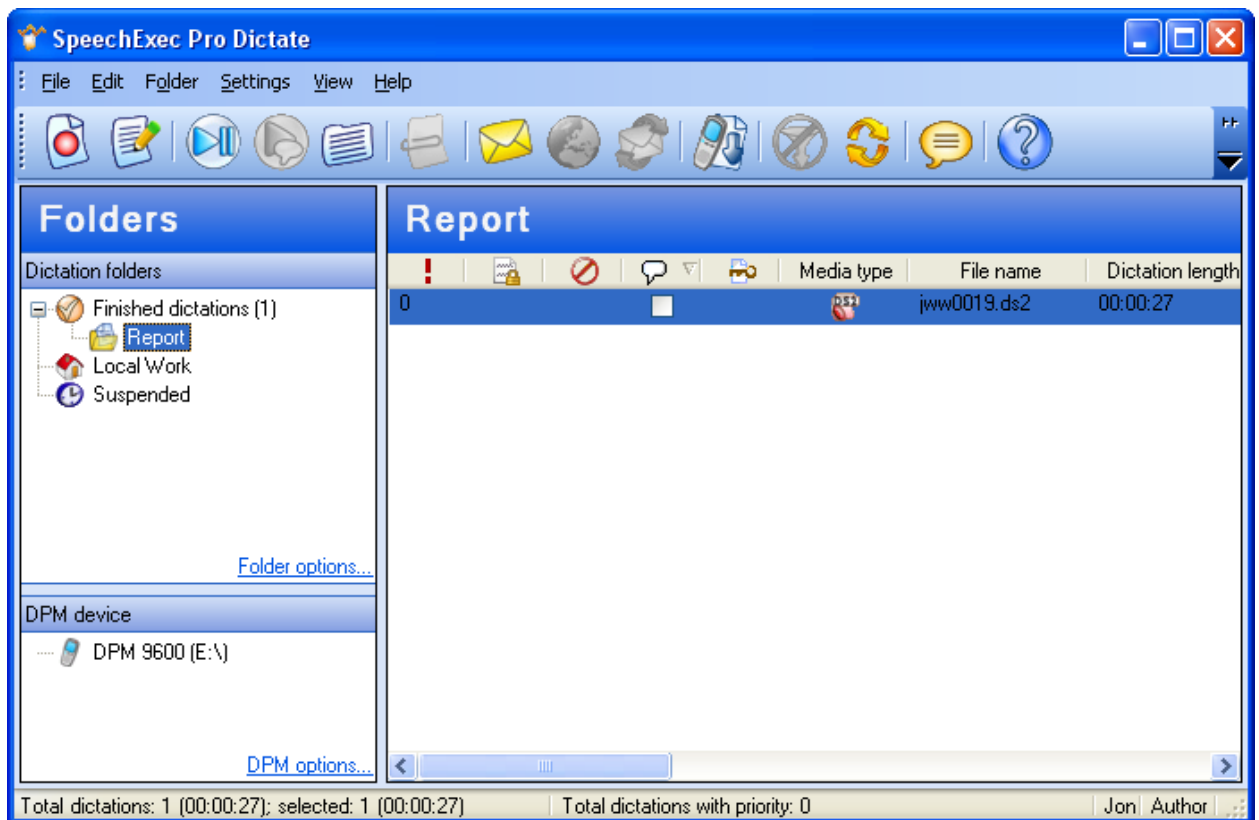
9. When you see the dialog box below, click on “Start Adapting”; the actual adaptation process is somewhat so, so be patient.
10. Follow the remaining steps to complete your new Dragon profile.



Final Step: Using your DPM 9600 with NaturallySpeaking

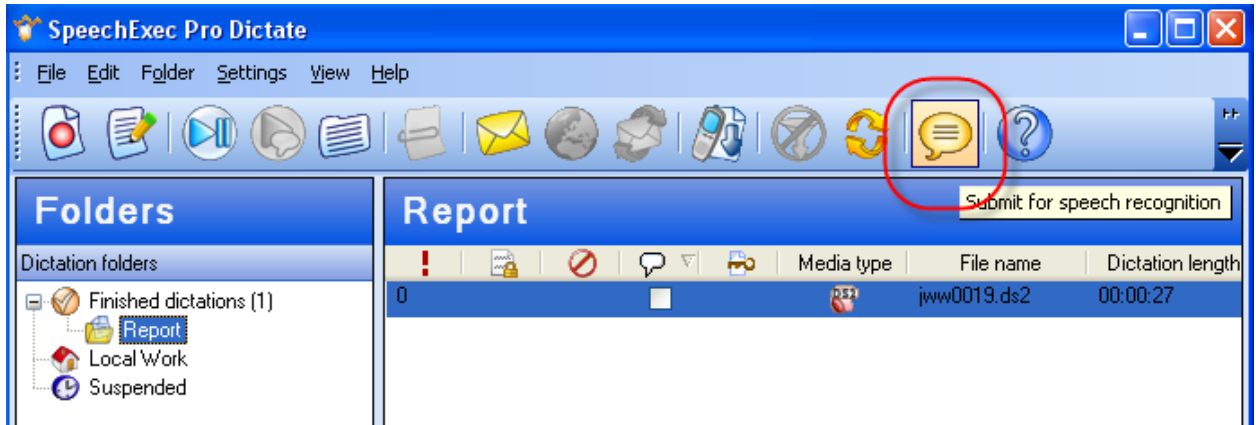
Now that you've got everything set up, you need to be familiar with the method of moving dictation from the DPM 9600 to your PC and instructing Dragon to convert your digital recording into text. This can be done a number of ways, but the basic process involves:

1. Complete your recording on the DPM9600
2. Open the SpeechExec Software; open Dragon NaturallySpeaking using the profile set up for use with the DPM 9600.
3. Place the DPM 9600 in the docking station connected to your pc. The file should automatically download to your pc and be visible in your SpeechExec window under the "Finished Dictation" category. To see the file it may be necessary to click on the category or keyword associated with the file type in the folders directory.

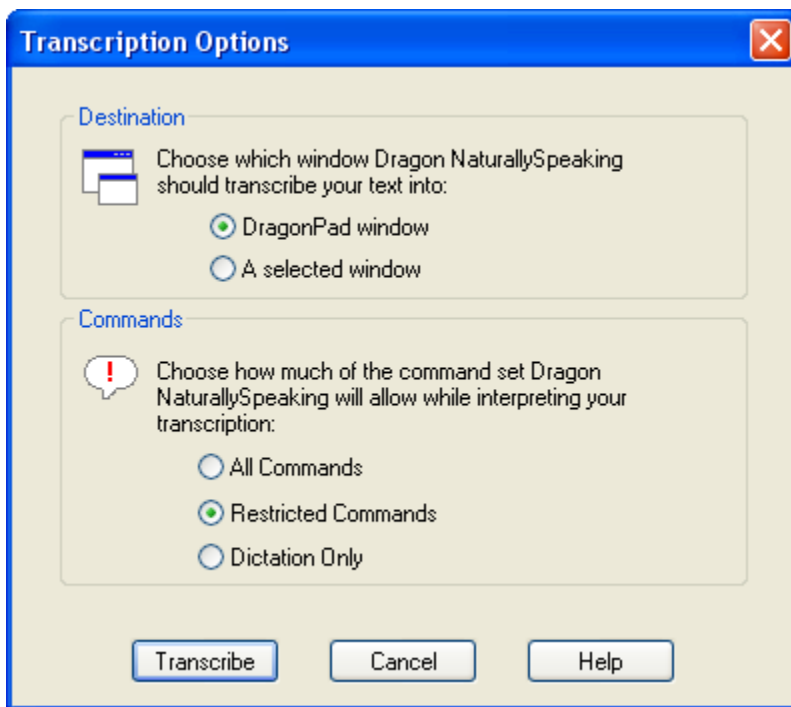


(If the file does not automatically show up when you place the DPM 9600 in the docking station you need merely click the "download" icon (to the right of the globe icon) on the top of the SpeechExec window.)

4. Transcribe the file by highlighting the file and then clicking on the Transcribe icon



You will see the transcription Options window which offers you choices about the text window into which you want the file transcribed and also some options regarding whether or not to recognize commands during the transcription.



1. Destination:
 - a. DragonPad: Click this option to specify that the recording should be transcribed into the DragonPad window. With this option selected, DragonPad will start, if it is not already running and the transcription will appear in a blank document. If DragonPad is already running, newly transcribed text will be added to any text currently in the document.

- b. **A Selected Window:** Click this option to specify that the recording should be transcribed into the next window you click in after closing the Transcribe Recording dialog box. Make sure the window you select accepts text and is open and active before you click Transcribe.
- 2. **Commands:** Choose either the All Commands, Restricted Commands, or the Dictation Only option.

All Commands: Click this option to enable all Dragon NaturallySpeaking commands during transcription. Any command recognized in the recording is carried out.

Restricted Commands: Click this option to disable all but the [restricted command set](#) during transcription. If other commands are recognized, they are entered as text. This option prevents potentially damaging misrecognitions (for example, a phrase being misrecognized as "Delete Previous Paragraph").

Dictation Only: Click this option to disable all commands during transcription, except for [dictation commands](#). If the recording contains commands, they are entered as text in the document.

After selecting the options you desire, select "transcribe" and either watch the transcription happen within DragonPad or navigate to your already open word processing program and click within an open document.

Note: Thanks to Lunis Orcutt of Knowbrainer.com for permission to borrow heavily from his guide of the same topic!